

Trees for Sensory Gardens

We love the idea of creating gardens to live in, not just to view. To live in a garden means that there is an element of interaction - trees with scent, different textures or with flowering, fruiting, coloured foliage or mottled bark for visual interest.



Arbutus unedo

IRISH STRAWBERRY TREE

This tree has an attractive red stringy bark that exposes the cream-coloured bark underneath. It has white flowers tinged with pink during Autumn and Winter but can flower longer. The flowers look like bunches of little bells. The fruits appear green and then ripen to a bright red and are edible. The dark green leaves have a decorative serrated edge making this an all round beautiful tree.



Eucalyptus pulverulenta 'Baby Blue' **(Tree form)**

SILVER-LEAVED MOUNTAIN GUM (TREE FORM)

This is a small-growing eucalypt usually seen as a tall, spreading shrub that retains its juvenile foliage into maturity. Young leaves, stems and inflorescences have a powdery white bloom. Foliage is strikingly silvery-grey and round in form. Cream flowers are produced between May and November and the large capsules that follow are cup-shaped.



Catalpa bignonioides

INDIAN BEAN TREE

This is a large attractive tree with a broad dome-shaped canopy and large long-stalked leaves. In summer it carries bell-shaped flowers in white, various pink shades, and soft apricot-orange, followed by clusters of long, pendulous, bean-like seed capsules, hence its common name.



Azara microphylla

VANILLA TREE

Azara microphylla is a small evergreen tree from South America with small deep green foliage that grows in a pinnate like form on slightly pendulous branches. Small yellow flowers are borne in spring and bring with it a nice vanilla scent.



Magnolia (syn. Michelia) doltsopa x laevifolia 'Inspiration'

INSPIRATION MAGNOLIA TREE (EVERGREEN)

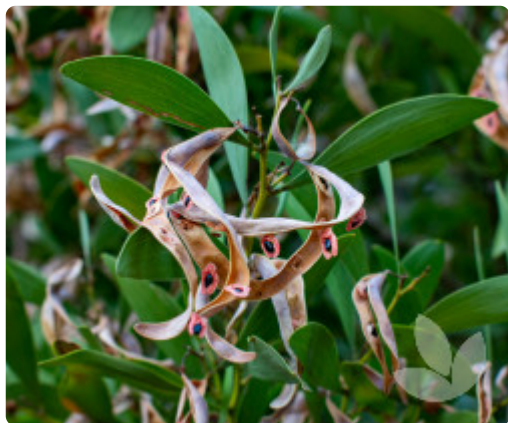
This is a larger growing hybrid with dark green leaves, dense habit and a beautifully sweet scent from white cupped flowers that adorn the tree in spring. Adds height to the garden growing to 4m tall.



Feijoa (syn. Acca) sellowiana

PINEAPPLE GUAVA TREE, FEIJOA TREE

This is a small evergreen fruiting tree to approximately 3m tall. It produces green-skinned fruit with a sweet, aromatic flavour, which taste like pineapple, apple and mint. As a tree, it has attractive leathery green leaves with silvery undersides and pinky-white flowers with large red stamens. Good as a contrast tree in the garden.



Acacia melanoxylon

BLACKWOOD WATTLE TREE

This Australian native that is indigenous to Victoria and Tasmania that will grow to about 12-15m. It has dark brown wood that is deeply furrowed wood. This is a hardy shade tree that produces masses of pale yellow flowers in clusters from late winter to early spring adding great colour in the winter months.



Corymbia citriodora 'Scentuous'

(syn. 'Dwarf Pink')

'SCENTUOUS' DWARF LEMON-SCENTED GUM TREE

This is a slightly narrow-domed Corymbia (syn. Eucalyptus), developed by Speciality Trees, doesn't shed its branches. It has a smooth trunk that may be slightly mottled. The bark is a pinky-salmon in colour. Leaves are narrow and highly aromatic when crushed smelling strongly of lemon. This tree features lovely cream-coloured flowers in summer.



Corymbia citriodora

LEMON-SCENTED GUM TREE

A beautiful, tall growing Corymbia (syn. Eucalyptus) with a distinctive, often powdery white to grey coloured bark which curls and flakes off in spring. Its leaves are green, long and slender with an amazing, strong lemon fragrance when crushed. Its strong scent is a distinguishing attribute, with the essential oils produced from this variety often being used in fragrances as well as insect repellents. In summer and autumn, feathery white flowers appear, making it a good source of food for honey bees.

Disclaimer: The material contained on the Speciality Trees website is for general information only. Although much care has been taken to provide the information on its website, Speciality Trees does not warrant the accuracy, completeness or currency of this information and its suitability to your needs. All material listed on the Speciality Trees website, its associated links and product sheets are varieties either ready for sale or in production. This is an information source and not confirmation of availability. It is strongly recommended that users enquire about product availability independently of this source.